

NESP LOCK & DAM NO. 25

Jose R. Lopez, PE, PMP
L&D 25 Project Manager
St. Louis District
USACE

Bryan J. Dirks, PE
L&D 25 Technical Lead
Inland Navigation Design Center
USACE

13 December 2024



U.S. ARMY



US Army Corps
of Engineers®





MISSISSIPPI RIVER LOCK 25–BLUF

STATUS / DASHBOARD

PROJECT SAFETY



Phase 1 – Lockwall Modification
37,747 hrs with no lost time accident

Phase 2a – Bulkhead Fabrication & Supply
**No lost time accidents*

Phase 2c – CON-OPS Facilities
**No lost time accidents*

PROJECT STATUS SUMMARY



Phase 2 – 1,200 ft Lock; Design SPI: *0.87*
Phase 2a – Bulkhead Fabrication & Supply
Awarded: 23 Feb 2024
Phase 2c – Construction-Operation Facilities
Awarded: *27 Sept 2024*

Next Major Contract Award(s):

Phase 2b – D/S Guide Cell – FY25, Q3
Phase 2e – Scour Repair – FY26
Phase 2 – New 1,200 ft Lock – FY27

FINANCIAL STATUS SUMMARY



Design is on budget
Planned Value: *\$60.8M*
Earned Value: *\$52.8M*
Actual Value: *\$40.5M*
Cost Performance Index: *1.3*

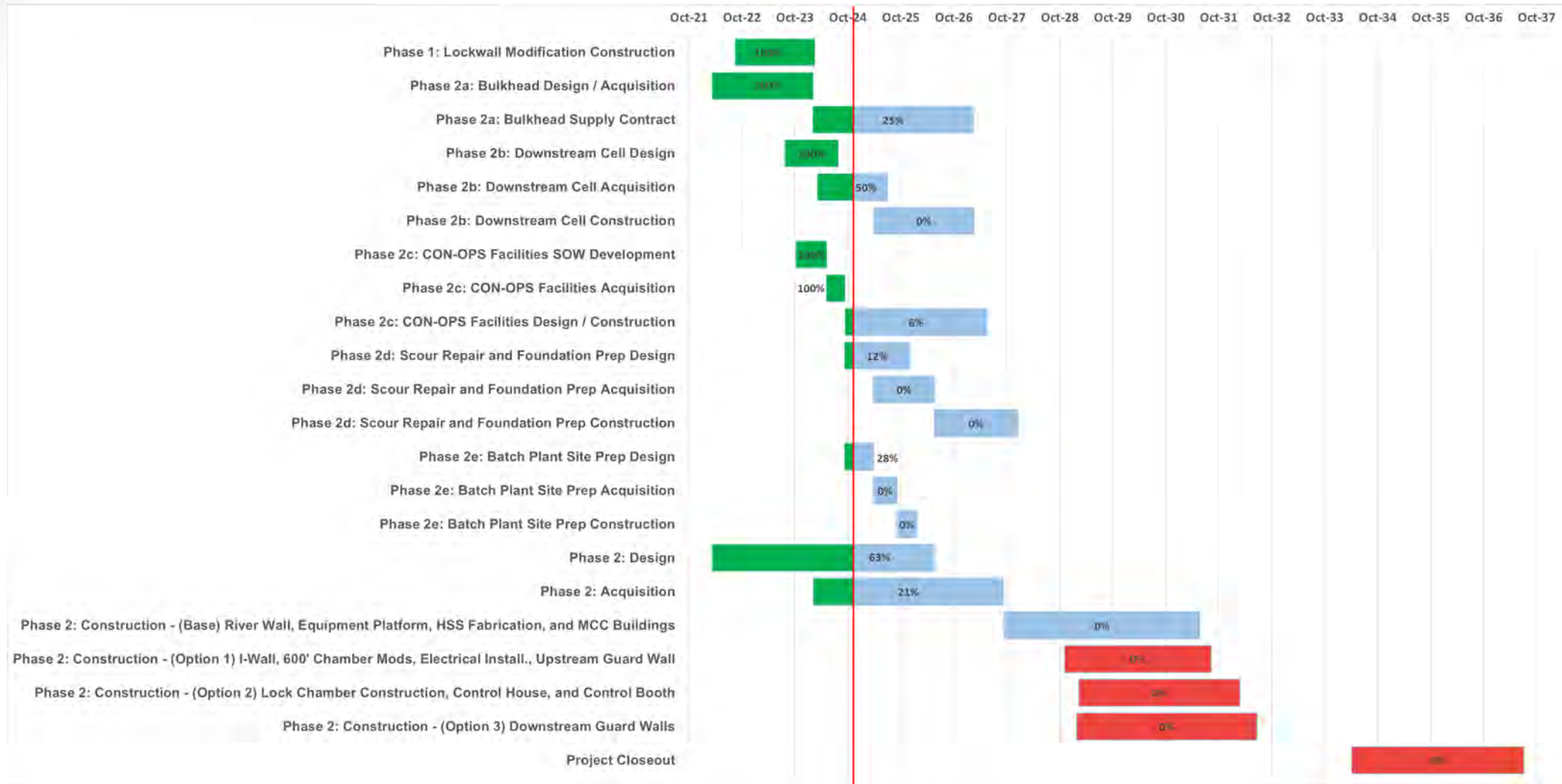
**through October 2024*

EXECUTIVE SUMMARY:

- Current project status:
 - **Advancing through the 65% review phase and conducting 65% CWE update.**
 - RE acquisition process (e.g. preliminary title) for Temporary Work Areas is ongoing.
 - **Supplemental NEPA Supplemental Environmental Assessment is complete. FONSI signed 22 Nov 2024.**
- The delivery method will now be Design, Bid, Build and the remaining BIL appropriations will be used to fund the base in a base + options contract structure, subject to Acquisition Plan approval.
- **PDT has conducted 2 Navigation Impacts Summits to elicit feedback on navigation impacts during construction.**
- **PDT will once again conduct 1-on-1s with potential contractors in January/February 2025.**
- In the absence of full project funding or efficient funding, there is a high likelihood for increases in schedule duration and total project cost.



MISSISSIPPI RIVER LOCK 25–SCHEDULE/FUNDING



- Out year cost and durations for Phase 2 construction are highly dependent on funding. Various funding scenarios have been developed.
- Phase 2a, 2b, & 2c fully funded through construction.
- All phases fully funded through design.
- **Green** is completed work, **blue** is funded but to be completed, **red** is unfunded work.



MISSISSIPPI RIVER LOCK 25–FUNDING SUMMARY

Allocations:	ARRA (\$M)	GI(\$M)	CG(\$M)	IWTF(\$M)	BIL(\$M)	Total(\$M)
Prior to FY 22:		\$15.72				\$15.72
FY 22:					\$732	\$732
FY 23:						\$0
FY 24:						\$0
FY 25:						\$0
Total to Date:					\$732	\$747.72
Remaining TPC Balance:						\$1,531

Total Project Cost (TPC)	\$2,263M	June 2023
Authorized Cost:	Not specific for Lock 25. Navigation and Ecosystem Sustainability Program carries these at the program level.	
Escalated Cost:		
902 Limit:		
PED Cost:	\$144.6M	June 2023
EDC Cost:	\$60.0M	June 2023
S&A Cost:	\$116.9M	June 2023

Fiscal Year Funding Scenario Breakout: Various scenarios have been developed. All highly dependent on funding streams.

	FY25	FY26	FY27	FY28	FY29	FY30	FY31	FY32	FY33	FY34	FY35	FY36	FY37	TOTAL
Efficient	-	-	\$403M	\$500M	\$500M	\$97M	-	-	-	-	-	-	-	\$1,500M*
Capability**	-	-	\$1,531M	-	-	-	-	-	-	-	-	-	-	\$1,531M*

**All cost shown are estimated Total Project Costs (Fully Funded) and have not undergone an ATR review. Previous ATR review focused on a singular fully funded contract.*

*** Capability is defined as the amount that the District is capable of obligating in the given year; which may not be supported by the IWTF.*



MISSISSIPPI RIVER LOCK 25–ISSUES/CHALLENGES

- **Challenge:** Project funding up to the certified cost.
- **Mitigation Strategies:** Contract structure to account for uncertain funding availability.
- **Challenge:** In-the Wet Construction Methodology – Box Form
- **Primary Mitigation Strategy:** Early and often engagement with construction industry.
- **Challenge:** Minimizing impacts and maximizing predictability to existing traffic.
- **Mitigation Strategies:** Continued engagement with navigation industry and collaboration with construction industry on closures and/or width restrictions.
- **Challenge:** Market Conditions and Labor/Material Availability
- **Primary Mitigation Strategy:** Economic Price Adjustment Clause.

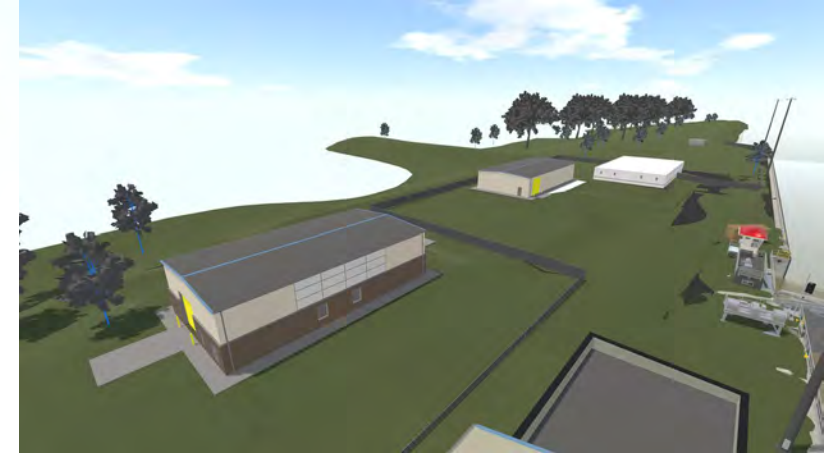


MISSISSIPPI RIVER LOCK 25—LOOK AHEAD

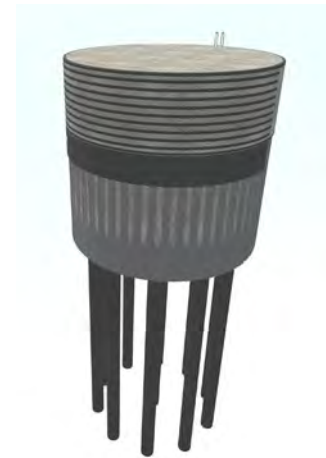
- **Phase 2c – CON-OPS Facilities**
 - Design/Build through Huntsville Center
 - Awarded to MVL, Inc – 27 Sept 2024
 - \$13.8M Firm Fixed Price Contract
- **Phase 2b – Guide Cell**
 - Scheduled for Award – Q4 FY25
- **Phase 2d – Scour Repair & Foundation Prep**
 - Under development/planning
 - Scheduled for Award – FY26
- **Phase 2 – 1,200 ft New Lock**
 - Currently in 65% Design Review Phase
 - Scheduled for Design Completion – June 2026



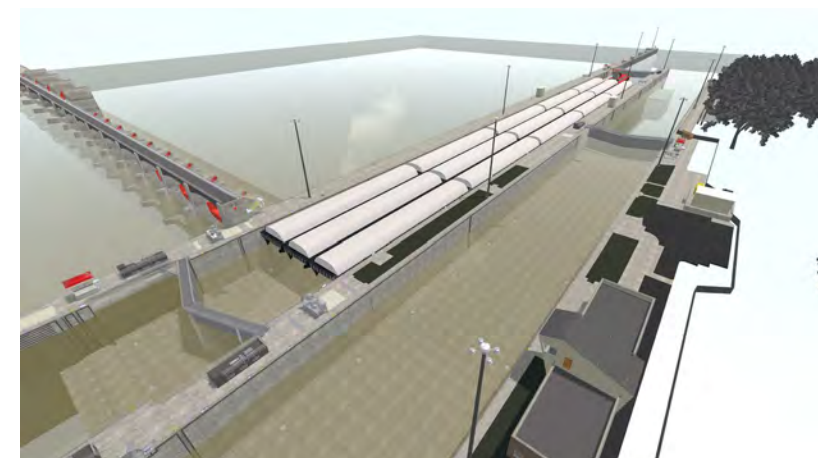
Phase 2a



Phase 2c



Phase 2b



Phase 2



BACKUP SLIDES



MISSISSIPPI RIVER LOCK 25-OVERVIEW

Authorization: Title VIII of Water Resources Development Act (WRDA) 2007, P.L. 110-114 and WRDA 2022, P.L. 117-263. Authorized cost in legislation is at the Navigation Ecosystem Sustainability Program (NESP) level, not for the individual projects.

Purpose/Description: The construction of a new 1200-foot lock at Lock & Dam 25 will significantly reduce delays and increase safety. Proposed project features include construction of a new 1200-foot deep founded lock located in the auxiliary miter gate bay, construction of an upstream ported guard wall totaling 1200-feet, and a 650-foot downstream approach wall.

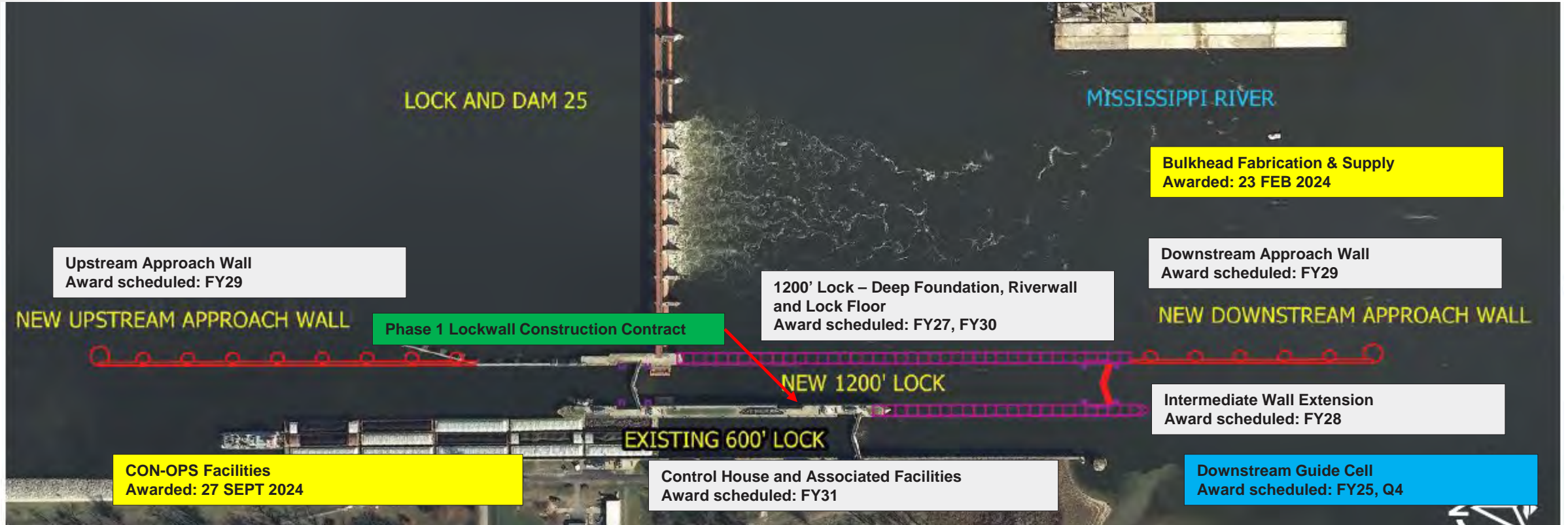
Schedule: Design: Complete FY26; Construction: Complete TBD, dependent on funding stream.

Cost: Latest certified Total Project Cost (TPC) is \$2,263,062,000 (Certified in June 2023) with 59% contingency at a 15% level of design. This cost was validated with industry offers for the ECI-IDaC solicitation. Current Working Estimate (CWE) for 35% is \$2,181,487,000. The next CWE update will occur at the 65% milestone in the Fall 2024. A new certified cost will be obtained then as well.

***estimates shown assume full or efficient funding.**



MISSISSIPPI RIVER LOCK 25 NEW 1200' LOCK-SCOPE



Contract Legend

Completed
Current
Upcoming
Future

*Timelines assume full/efficient funding and are subject to change.